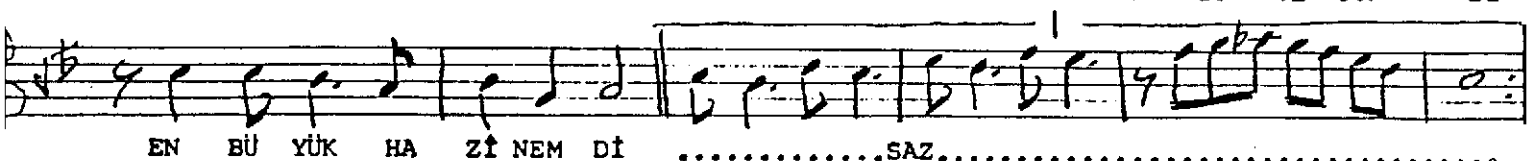
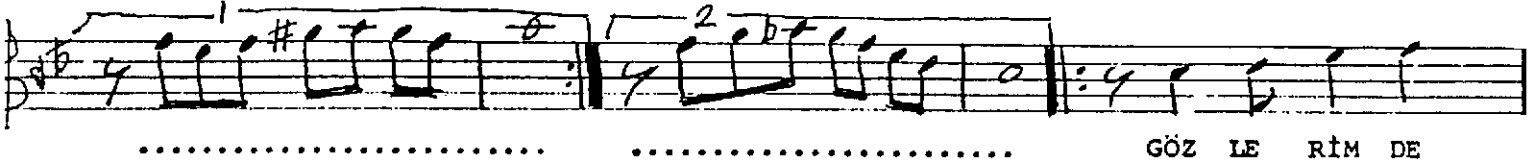
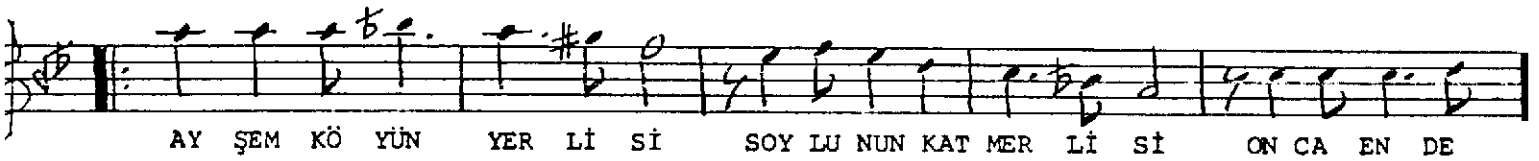
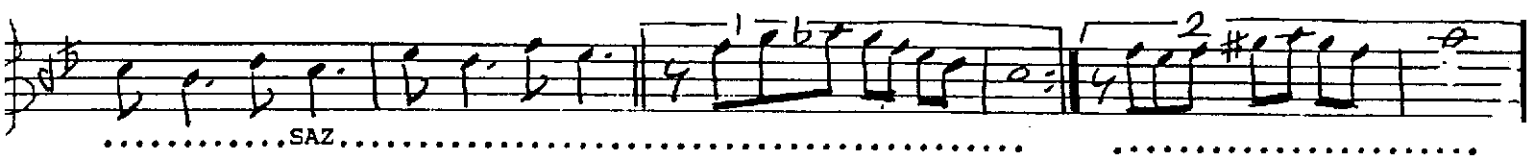
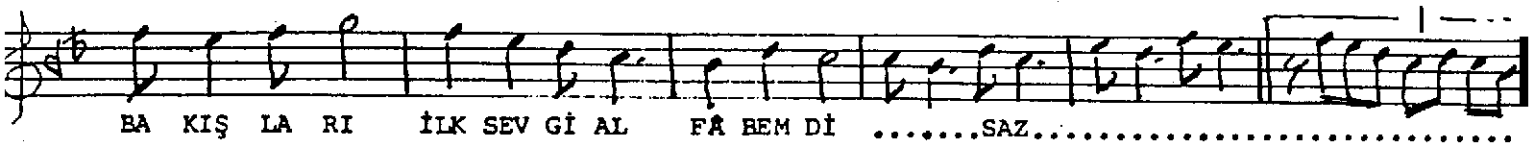
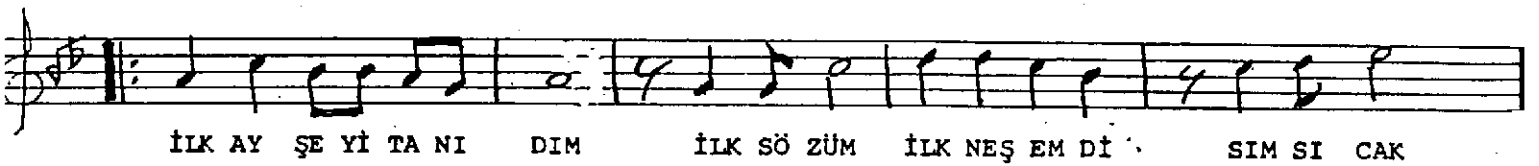
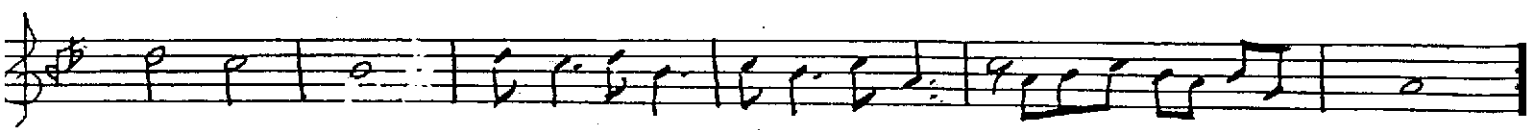


Sofyan

S A B A Ş A R K I
-İlk Ayşe'yi Tanıdım-

Söz ve Müzik:
Fethi KARAMAHMUDOĞLU

♩:110



"Sabâ Şarkı"nın devamı

.....SAZ..... BİR SE RİN GÜZ LE GİT Tİ

BİR GÜ ZEL YÜZ LE GİT Tİ EN DE RİN İZ LE GİT Tİ AY ŞE BE

AN NEM Dİ AY ŞE BE NİM AN NEM Dİ (SON)

7.10.1997 (11.50)

İLK AYŞE'Yİ TANIDIM
İLK SOĞUM İLK NEŞ'EMDİ
SİMSİCAK BAKIŞLARI
İLK SEVGİ ALFABEMDİ

MASALIMDI DİLLERİ
HASBAHÇEMDİ GÜLLERİ
AYŞEMİN AK ELLERİ
ZANBAĞIMDI LÂLEMİDİ

AYŞEM KÖYÜN VERLİSİ
SOYLUNUN KATMERLİSİ
ONCA EN DEĞERLİSİ
BENDEN ÖNCE ÜLKEMDİ

GÖZLERİMDE EDASI
KULAĞIMDA SEDASI
ÖMÜR BOYU VEFASI
EN BÜYÜK HAZİNEMDİ

BİR SERİN GÜZLE GİTTİ
BİR GÜZEL YÜZLE GİTTİ
EN DERİN İZLE GİTTİ
AYŞE BENİM ANNEMDİ